

# Array

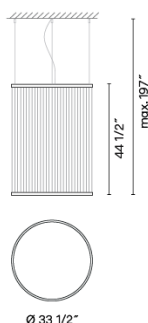
1830

Design By Umut Yamac

The Array pendant combines a series of fine technical filaments between two rings, The indirect light rises through the cylindrical form creating a color gradient.

VIBIA

## Spec sheet



**Optional: Extra cable length**  
Min. Quantity, upcharge and extra lead time apply

Finish	24 Beige M1 NCS S 2005-Y50R
	37 Terra Red NCS S 4040-Y70R
	47 Green L1 NCS S 4005-G80Y

LED color temperature 2700 K

Dimming 0-10V

Installation type Surface / Remote Micro

**Materials**  
Upper ring: Aluminum  
Bottom ring: Brass  
Diffuser: PC- Polycarbonate  
Threads: PES FR

Light source 1 x LED STRIP 50W 48V

LED CRI>90 6050 lm 121 2700 K

Driver Constant Voltage 100~277 V V  
50~60 Hz HZ

Dimmable LED IP20 Multi-volt

UL Dry Location 50-60Hz 0-10V

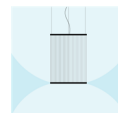
Application Pendants

**Packaging**  
1 Box  
4.72 m x 36.61 m x 36.61 m  
Gross weight 34.36  
Net weight 22.25  
Vol. 3.6622

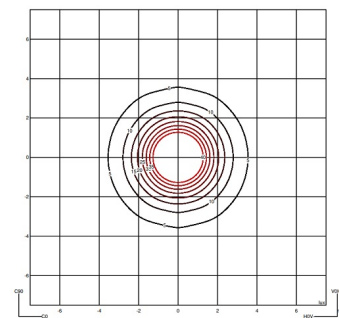
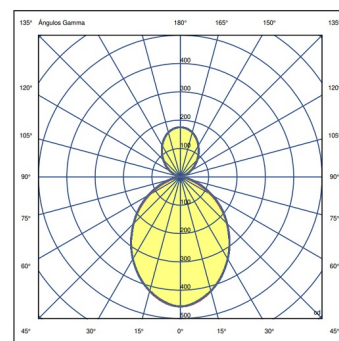
### Lighting effect

#### General lighting

Lamp for general lighting that equally distributes the light in all directions.

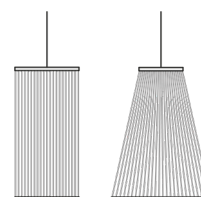


### Photometric Data



Efficiency	100%
Coordination System	CG
Total Flux	1347
Maximum Value	457.46 cd

### Other Applications



VIBIA, INC.

USA & CANADA  
272 Fernwood Ave. Edison, NJ 08837. USA  
Phone 732 417 1700 sales@vibia.com www.vibia.com/us/usa

HEADQUARTERS  
Progrés 4-6. 08850 Gavà  
(Barcelona - Spain)